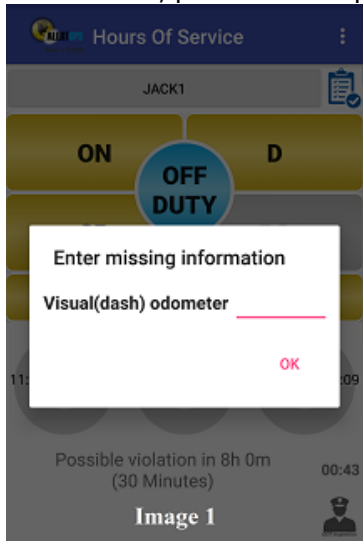


Below are a few very important tips that will save you time and help you use the system properly.

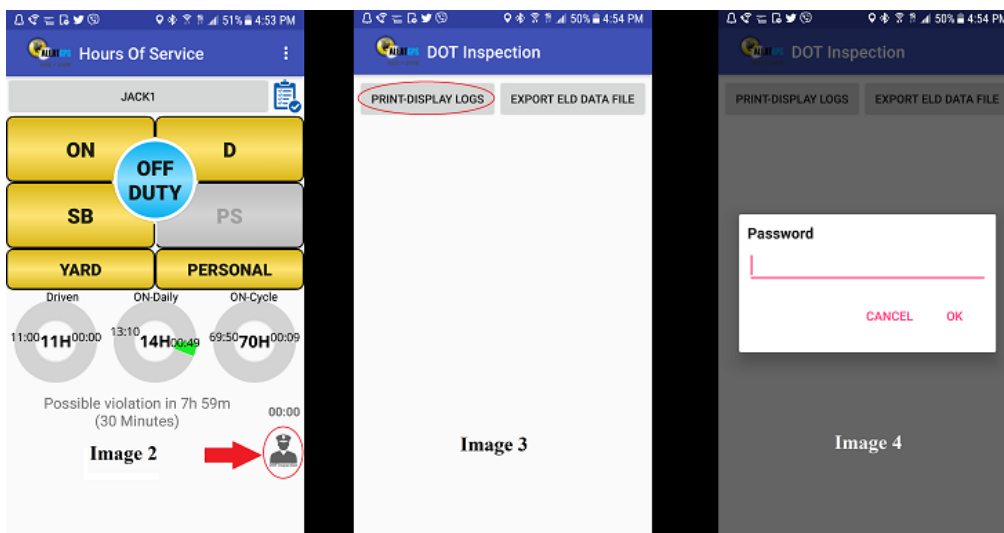
1. **ENTER MISSING INFORMATION**- Before driving, please make sure that your tablet is connected to the ELD device. If you get a message stating "Enter Missing Information" (image 1), your ELD device is not connected to your tablet.

If this occurs, please refer to page 12. of our Alert Gps User guide.



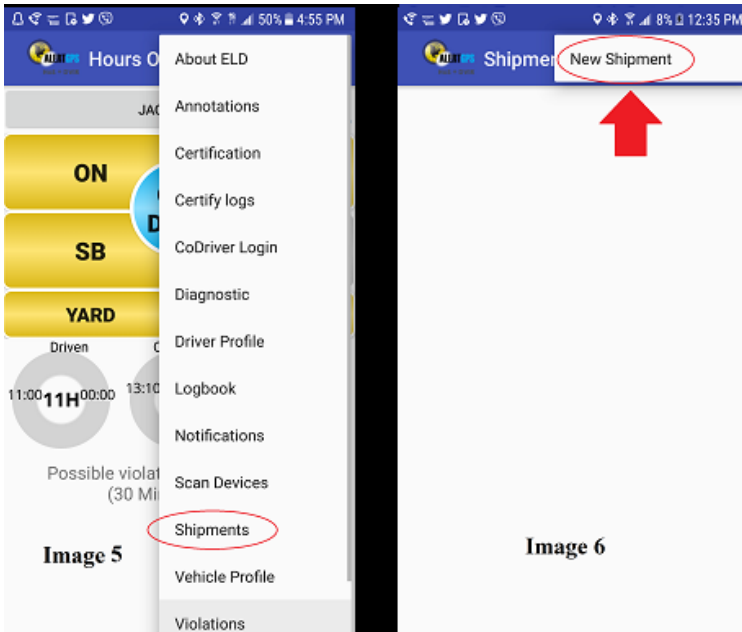
2. **PRE-TRIP INSPECTION**- Please refer to the Alert Gps user guide, pages 23-42.

3. **DOT INSPECTION**- When you have a roadside inspection, click on DOT Inspection "policeman icon" (image 2), then click on Print-Display Logs (image 3), allow 30 seconds for the Logbook file to generate. After the roadside inspection is complete, please click the back button, then type in your password in order to go back to your HOS application (image 4).

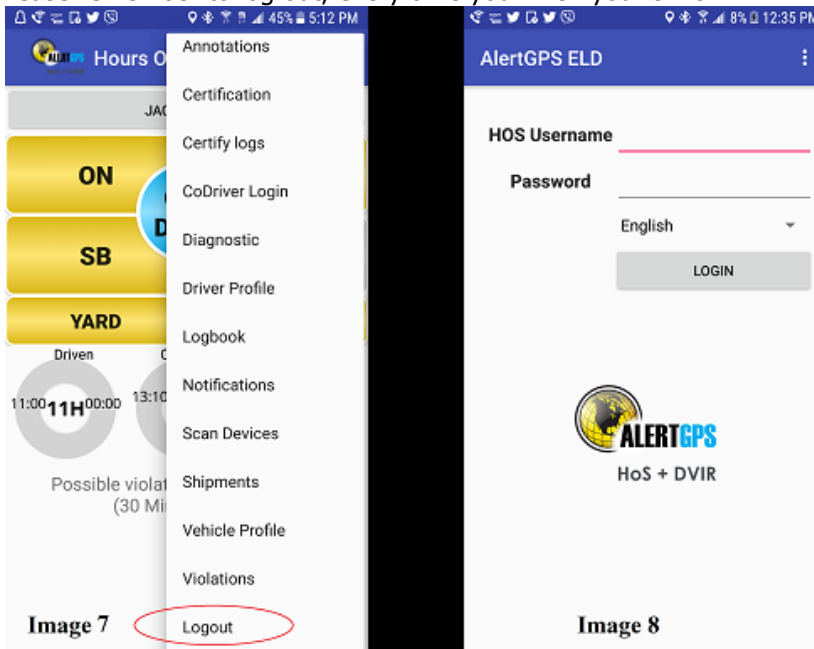


4. **BACK BUTTON**- in order to go back to the previous page, you need to click on the back button (Arrow).

5. **BILL OF LADING"/SHIPMENTS-** Please select the Shipments option from the dropdown menu (image 5), then click on 3 dots(menu) button, then select New Shipment (image 6).



6. **LOGOUT-** After you click the logout button (image 7), if system is still displaying the main HOS page, please wait 60 seconds and click the logout button again. After you log out, you should see the Login page again (image 8). Please remember to log out, every time you finish your shift.



7. Please keep your tablet charging at all times.

8. Please check if your tablet has internet access.